

# SRP DIABETES SEMINAR

---

## PGC-1 $\alpha$ and the Pathways of Oxidative Metabolism: Basic Biology and Therapeutic Opportunities

**BRUCE SPIEGELMAN**

**Stanley Korsmeyer Professor**

at Harvard Medical School/  
Dana-Farber Cancer Institute.



Dr. Spiegelman's laboratory focuses on the regulation of energy homeostasis in mammals, primarily at the level of gene transcription. These studies have applications to the development of new therapies for diabetes, obesity, muscular, and neurodegenerative diseases.

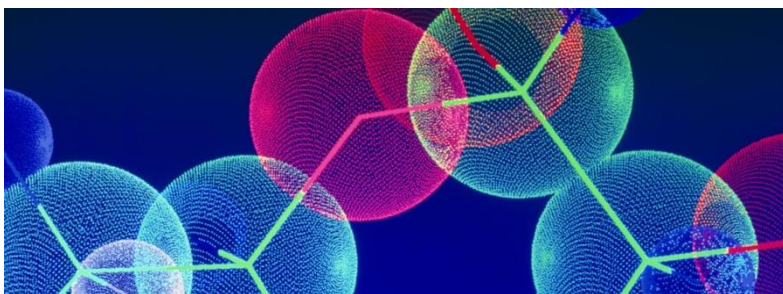
**Date:** Friday May 19<sup>th</sup>, 14:00 –15.00

**Place:** Nobel Forum, Karolinska Institutet, Solna

**Host:** Jorge Ruas/ SRP Diabetes

After the seminar there will be a reception for which we need your **registration**, by latest Monday May 15<sup>th</sup>

Contact [Barbro.Svensson@ki.se](mailto:Barbro.Svensson@ki.se)



**Karolinska  
Institutet**