

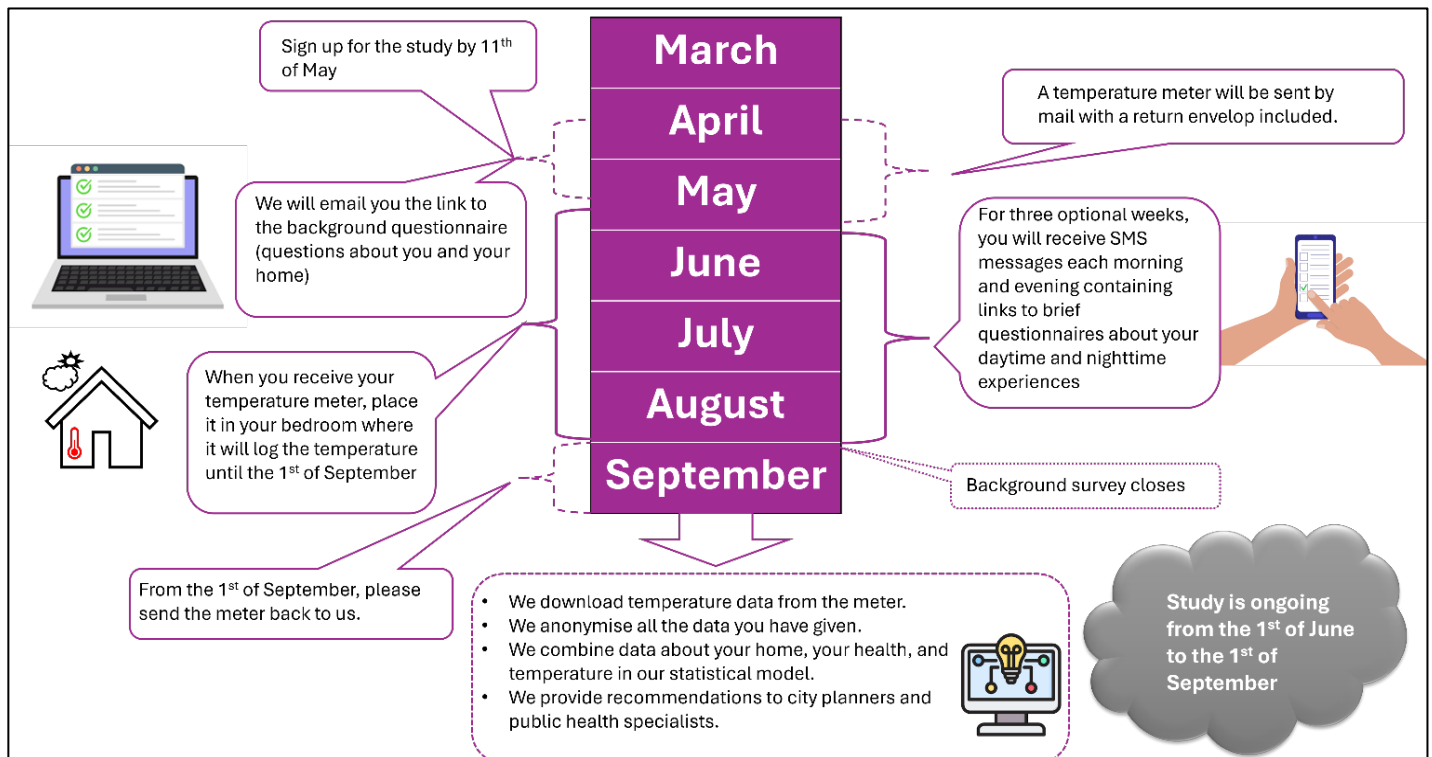
Would you like to take part in a research study about heat, housing, and health? Sign up for HEATWISE_{Sweden}

You are receiving this letter because you have been randomly selected to take part in the HEATWISE Sweden study, led by researchers at the Institute of Environmental Medicine at Karolinska Institutet. The selection includes residents of Umeå, Stockholm, Uppsala, Gothenburg, Lund, and Malmö. We are now asking whether you would be willing to participate during the summer of 2026.

This study explores how heatwaves in Sweden affect indoor environments, as well as people’s health and sleep. In Sweden, we spend about 90 percent of our time indoors, which means that the indoor environment plays an important role in our overall health and well-being. Although heatwaves are known to be associated with various health problems, there is still limited knowledge about how warm it actually gets inside Swedish homes during hot summers. We also know little about how these indoor temperatures affect people’s health and why some homes become warmer than others. By taking part, you can help contribute valuable knowledge needed to develop future guidelines for healthier indoor environments in a warming climate.



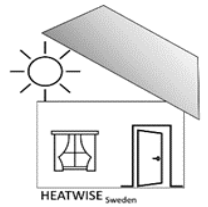
Your participation – step by step



A more detailed description of what participation involves can be found in the document “HEATWISE Sweden – information about the study” on the webpage:

ki.se/imm/heatwise-sweden

If you have any questions or concerns, please contact **heatwise-imm@ki.se**



Participation in the study is completely voluntary. If you do not wish to take part, please disregard this invitation.

How to sign up for the study

Scan the QR-code with your mobile phone camera or visit:

www.redcap.link/heatwise2026.se

To register no later than May 11th 2026!

The questions are available in English or Swedish

When you open the link, you will be asked to answer a few short questions. Based on your answers, you will immediately be informed on the screen whether you are eligible to take part in the study. It only takes a couple of minutes to complete.



The research principal for the project is the Institute of Environmental Medicine at Karolinska Institutet.

By research principal is meant the organization that is responsible for the project.

The application has been approved by the Swedish Ethical Review Authority; the reference number for the review is **2023-06091-01**.

Possible consequences and risks of participating in the study

Participation will not involve any medical risks or discomfort, but it will require a considerable amount of commitment and discipline on your part. Your responses will be handled in such a way that unauthorized persons cannot access them. All data processing is carried out in accordance with the General Data Protection Regulation (GDPR).

What happens to my data?

The project will collect and register information about you. Karolinska Institutet is the data controller responsible for the processing of your personal data. All data collected in the study will be stored in a register within a protected network and processed only by authorized personnel at Karolinska Institutet. During data processing, your name is replaced with a code and your address with geographical coordinates, so that individual participants cannot be identified. Results from the study will be published as research reports and presented in both scientific and popular science contexts. When reporting results, data relating to individual participants will never be disclosed. Your responses and results will be handled in such a way that unauthorized persons cannot access them. Karolinska Institutet is responsible for your personal data. For questions regarding this, please contact: ub@ki.se. In accordance with the EU General Data Protection Regulation, you have the right to access, free of charge, the personal data about you that are processed in the project and, if necessary, to have any errors corrected. You may also request that your data be erased and that the processing of your personal data be restricted. However, the right to erasure and restriction of processing does not apply when the data are necessary for the ongoing research. If you wish to access your data, please contact **Mare Löhmus Sundström**, the person responsible for the study, by email: heatwise-imm@ki.se. The Data Protection Officer can be reached at: dataskyddsbud@ki.se.

If you are dissatisfied with how your personal data are being processed, you have the right to submit a complaint to the **Swedish Authority for Privacy Protection**, which is the supervisory authority.

How will I receive information about the results of the study?



Stockholms
universitet



UMEÅ
UNIVERSITET