

Research

KI's research spans the entire biomedical field – from basic experimental research to clinical studies in collaboration with the health care system:

- ▶ Health and disease throughout all stages of life
- ▶ Global health and international collaboration
- ▶ The future of healthcare – precision medicine, ATMP*, AI, and prevention
- ▶ Cancer and immunology – better diagnostic tools and treatments
- ▶ Brain, nervous system, and mental health
- ▶ Registry research, epidemiology, and biostatistics
- ▶ Curiosity-driven basic research on the body's smallest components

*advanced therapy medicinal products

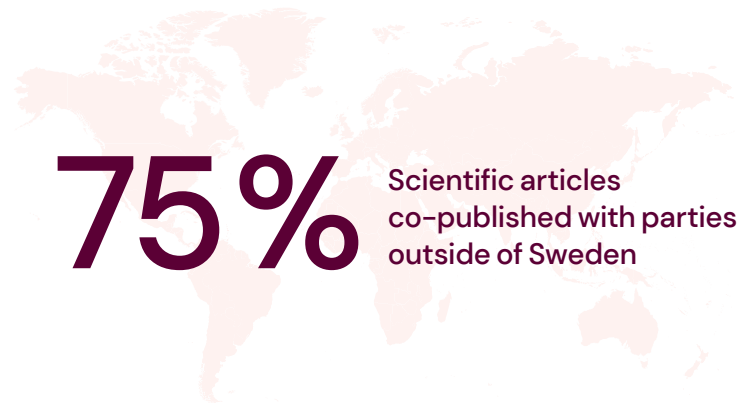


KI conducts pioneering research in areas such as cancer, neuroscience, immunology, epidemiology, nursing and global health.



At KI, you will find opportunities to embark on a lifelong career in academia, in healthcare, or in the life sciences sector.

Annika Östman Wernerson
President, Karolinska Institutet



KI's researchers publish articles together with researchers based in around 180 different countries. The country with the most co-publications is the United States, followed by Great Britain and Germany.

Karolinska Institutet (KI) is one of the world's leading medical universities. Our vision is to advance knowledge about life and strive towards better health for all. Karolinska Institutet accounts for the single largest share of all academic medical research conducted in Sweden and offers the country's broadest range of education in medicine and health sciences. The Nobel Assembly at Karolinska Institutet selects the Nobel Laureates in Physiology or Medicine.



**Karolinska
Institutet**

Produced by KI's Communications and Public Relations Office 2025.

This is

KI

Education

KI offers the widest range of medical education in Sweden. At KI, approximately 10,000 students study longer or shorter education programmes and courses. Most of the study programmes lead to professional degrees while others offer a general degree.

13

beginner's
programmes

32

continuation
programmes

98

freestanding
courses

Full-time equivalent
students

6,483

73 %
Women



27 %
Men

Degrees

2,860

Doctoral students

2,230

62 %
Women



38 %
Men

Doctoral
degrees (PhD)

341

Professors

328

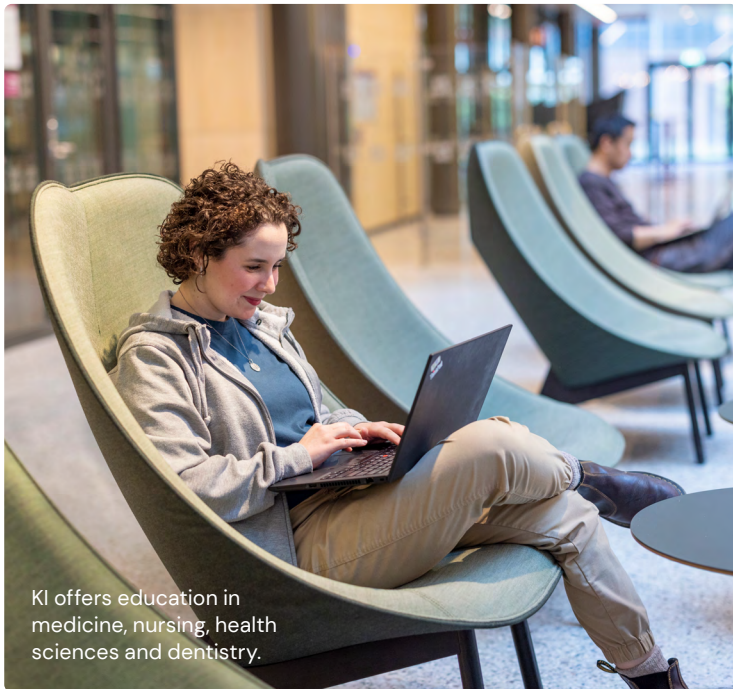
34 %
Women



66 %
Men

External
research grants

5 SEK
billion



KI offers education in
medicine, nursing, health
sciences and dentistry.

Doctoral education

KI has over 2,000 doctoral students which means that 33 % of all doctoral students in Medicine and Health Sciences in Sweden are at KI.

Each year, over 350 students complete their doctoral degree (PhD). KI's doctoral students have backgrounds in a variety of scientific fields, and a large proportion come from abroad.



Education and research is conducted on Campus Solna and Campus Flemingsberg, and through the healthcare sector in the Stockholm region.

Collaboration

Close collaboration and innovation are an important part of the transition of knowledge and results to the community. Such transitions will promote better health and cure disease.

KI has extensive international partnerships in both research and education and a broad community engagement. This will increase even more, not least through the health-related areas included in the UN Agenda 2030.

Follow Karolinska Institutet



Get the latest news from Karolinska Institutet
in social media and on ki.se/en

Karolinska Institutet
SE-171 77 Stockholm
Phone +46 8 524 800 00