

Preclinical Imaging Facility (PIF)

Ying Zhao ^{1,2}, Manon Renault ^{1,2}, Jia Sun ^{1,2}, Moustapha Hassan^{1,2}

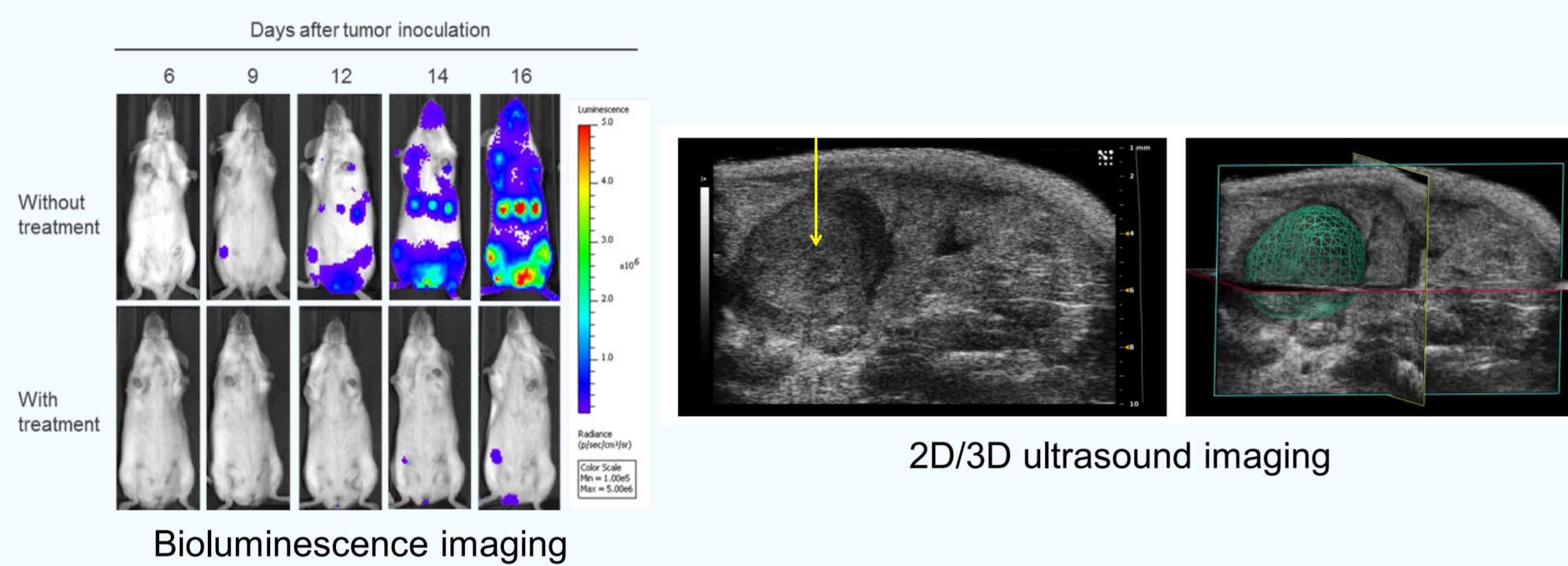
1. Preclinical Imaging Facility, Preclinical Laboratory, Karolinska University Hospital; 2. ECM, BCM, Department of Laboratory Medicine, Karolinska Institutet, 141 86 Huddinge Sweden

Mission

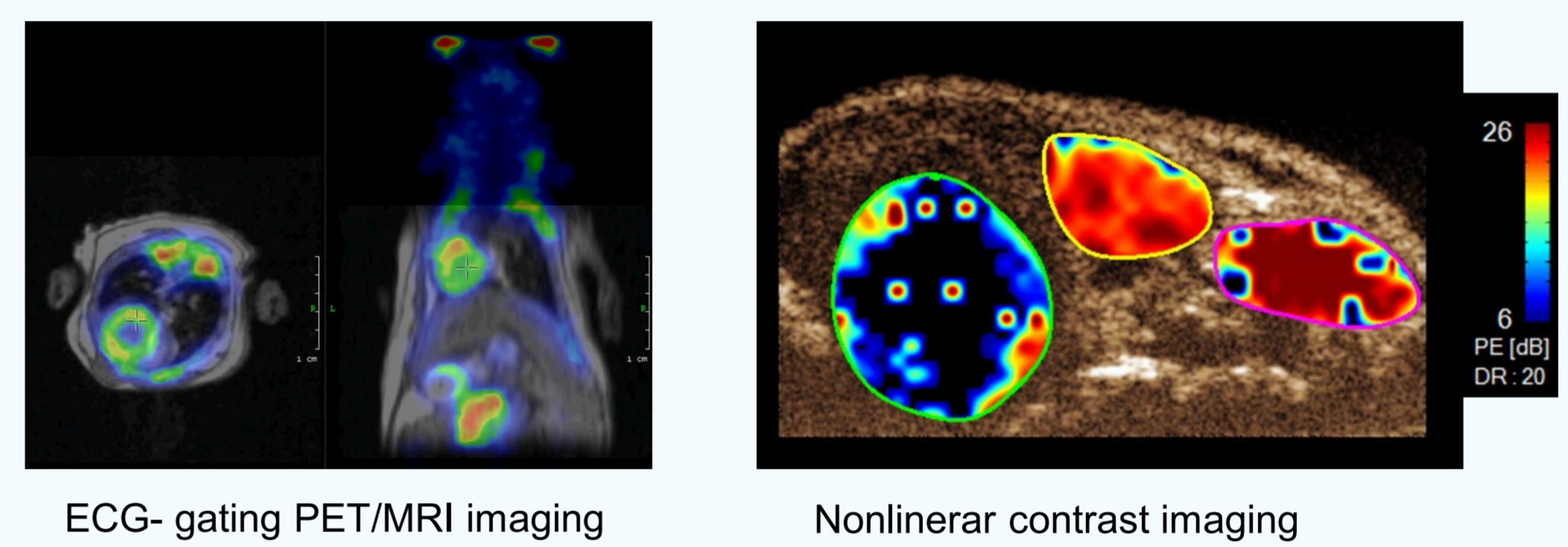
- Provide comprehensive possibility to perform multi-modality imaging studies.
- Develop new methods and techniques that are specific for the research performed at K-Huddinge / KI-Syd incl. cancer, regenerative medicine, transplantation, molecular therapy and cell therapy (ATMP).



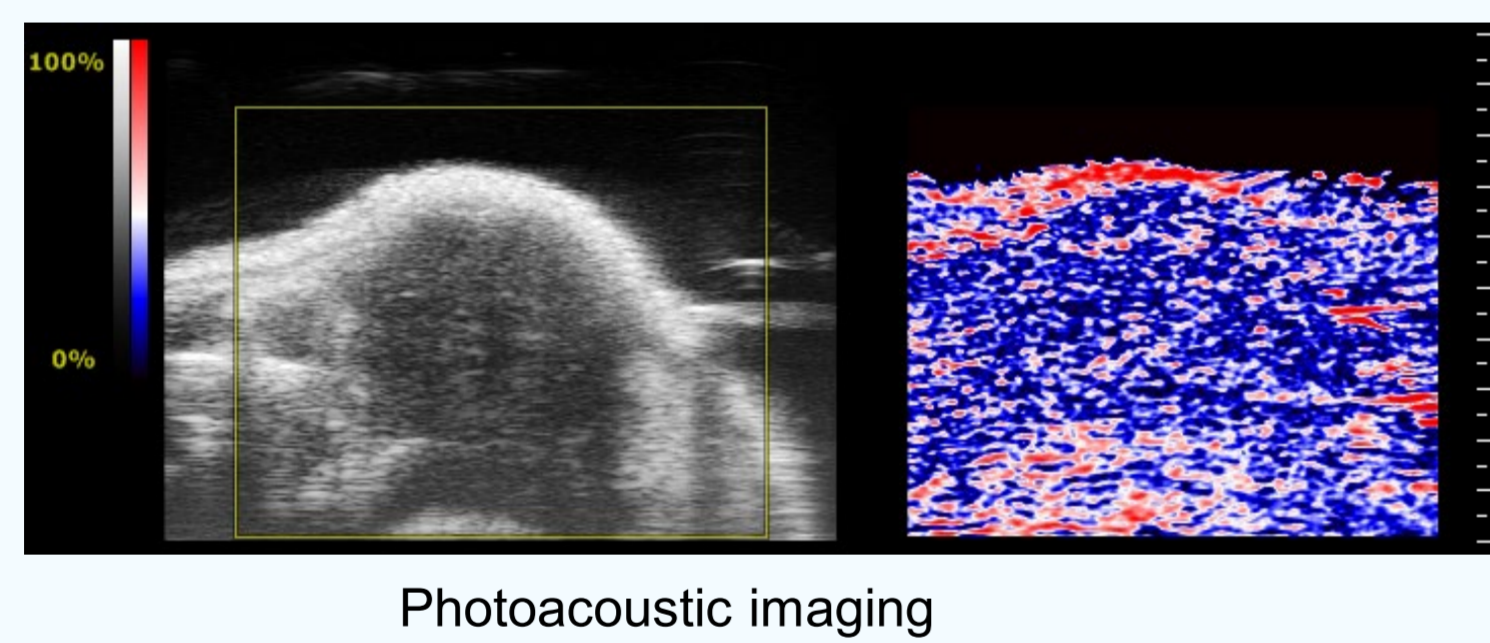
• Cancer development and therapeutic effect



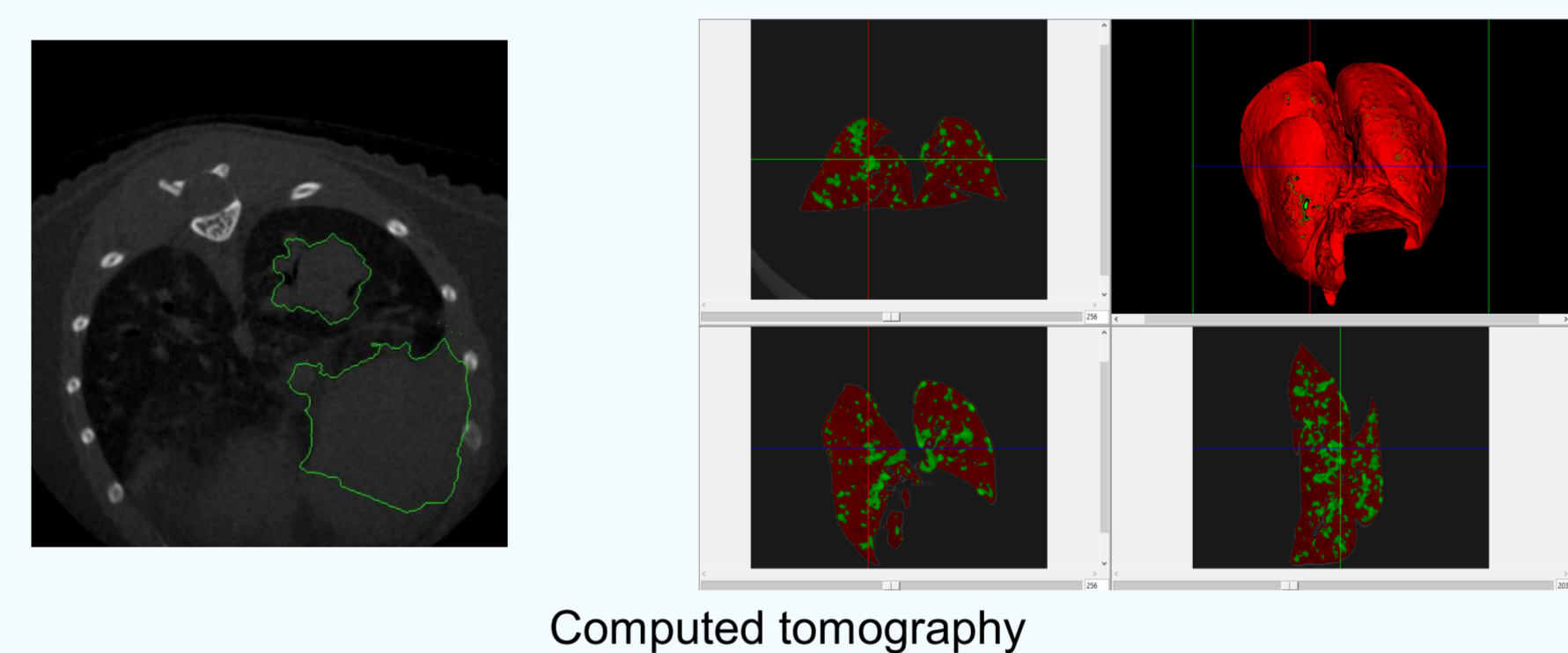
• Tumor metabolism / perfusion



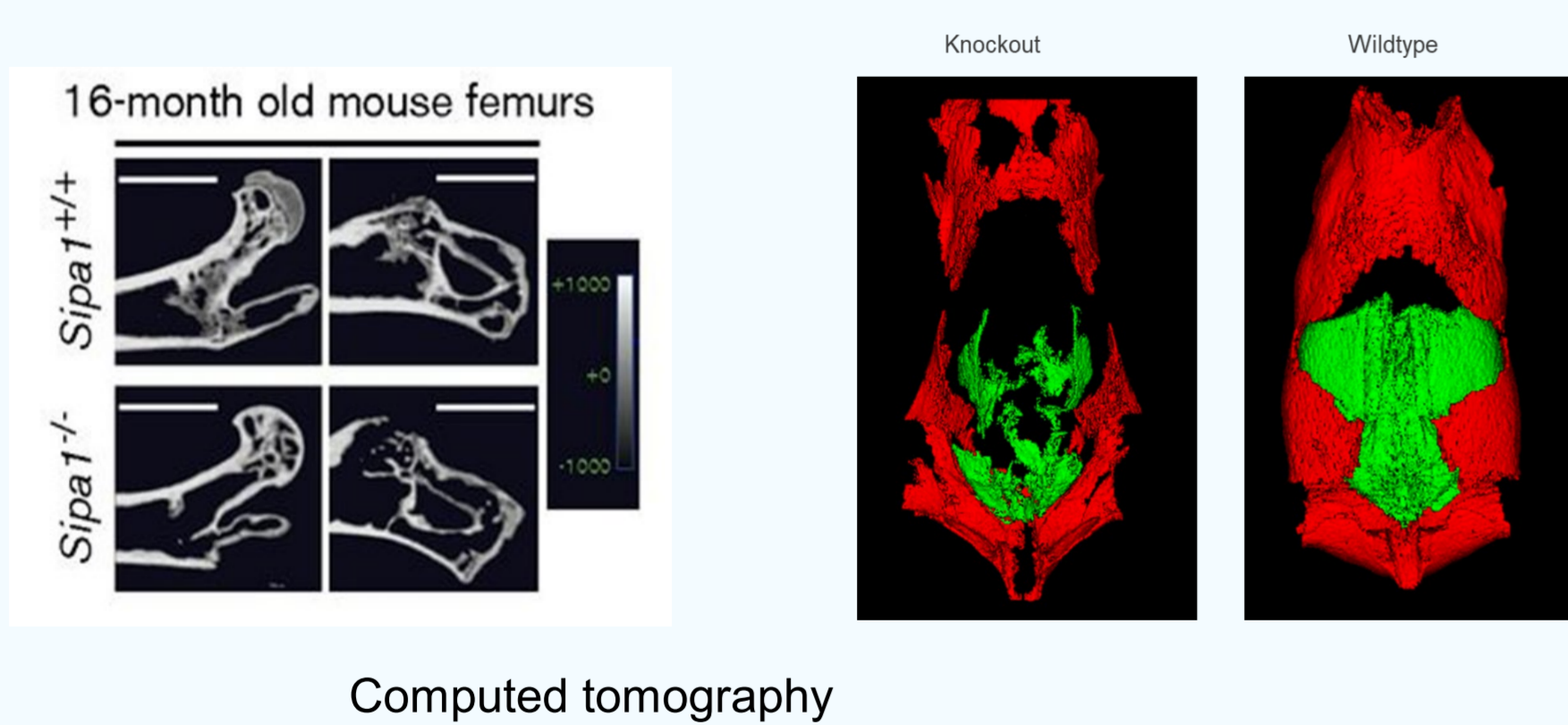
• Oxygen saturation and hypoxia



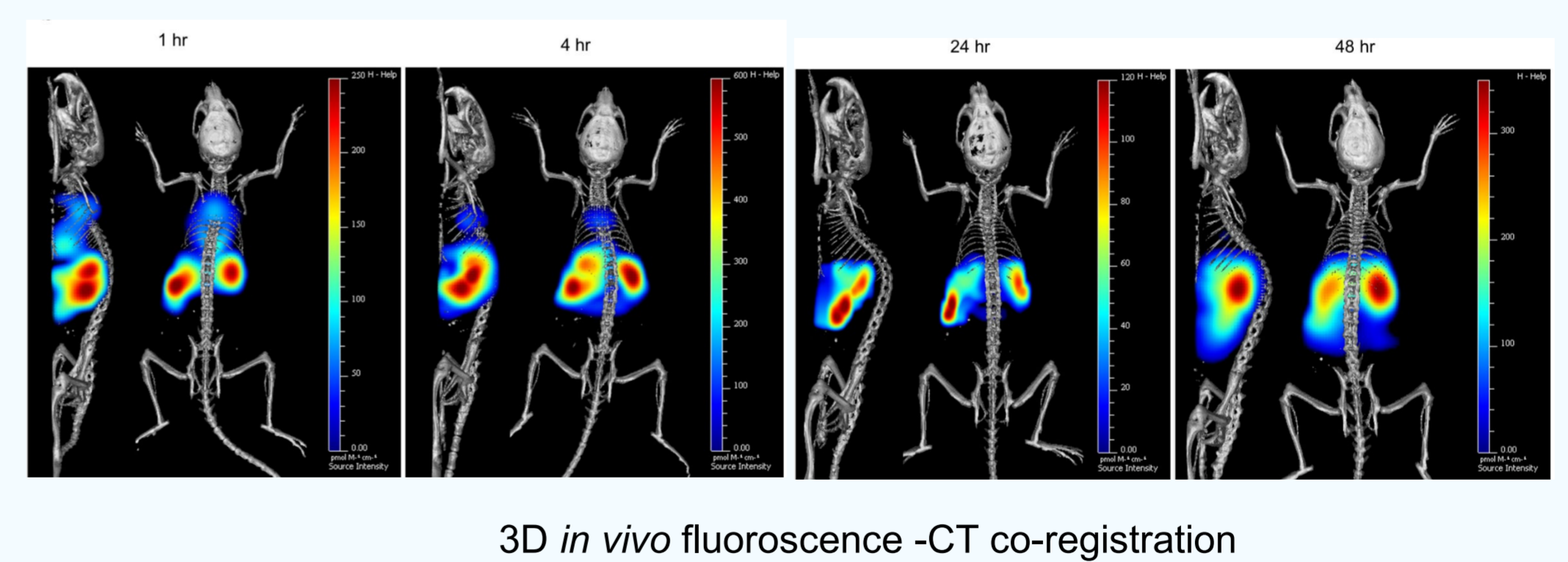
• Lung cancer / metastases analysis



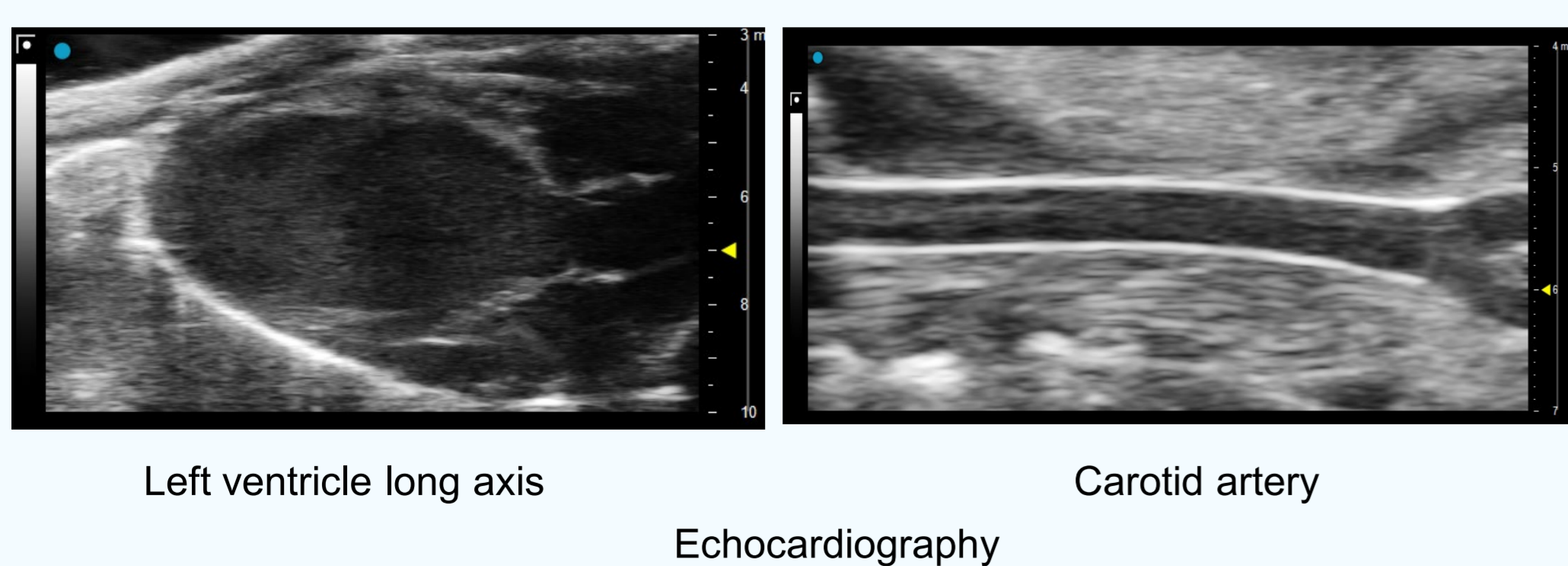
• Bone and fat analysis



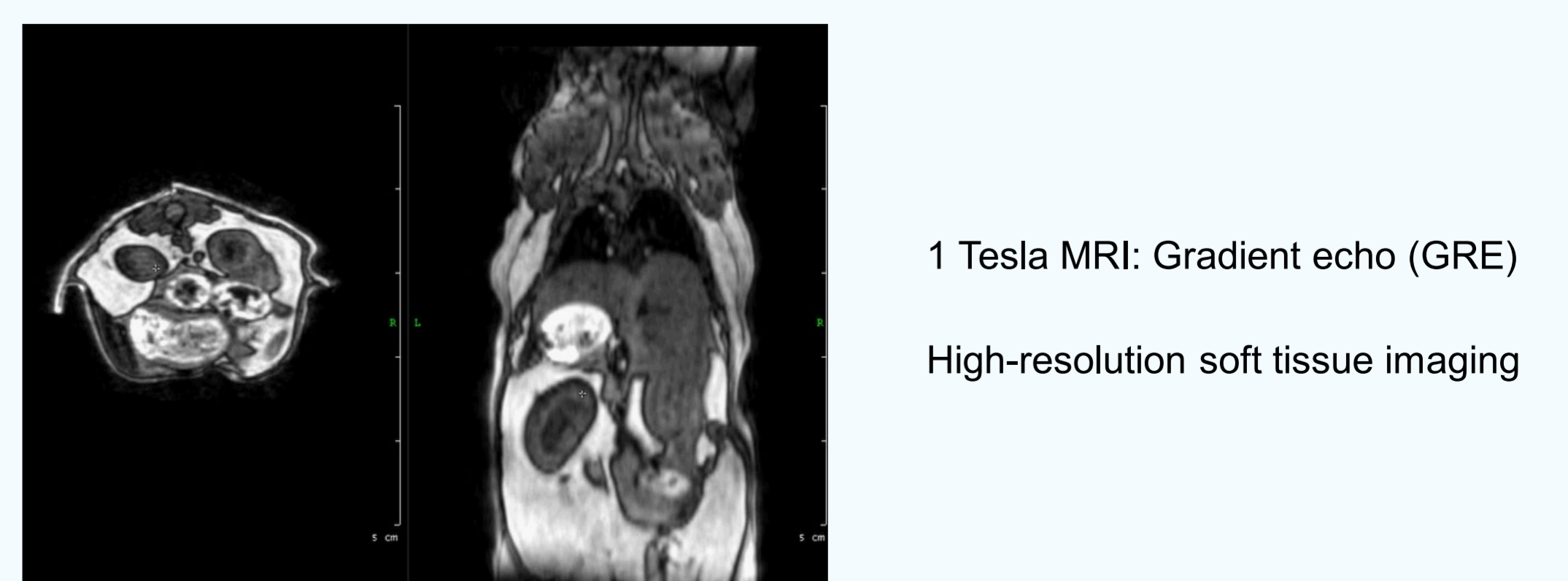
• Nanoparticle / cell tracking



• Cardiovascular function



• Liver function analysis



Location:
Karolinska University Hospital Huddinge

Head of facility:
Professor Moustapha Hassan
E-mail: Moustapha.Hassan@ki.se

Scientific director:
Ying Zhao, Assoc. Prof.
E-mail: ying.zhao.1@ki.se

CIMED
CENTER FOR INNOVATIVE MEDICINE

KAROLINSKA INSTITUTET
Karolinska Institutet

KAROLINSKA
UNIVERSITETSSJUKHUSET