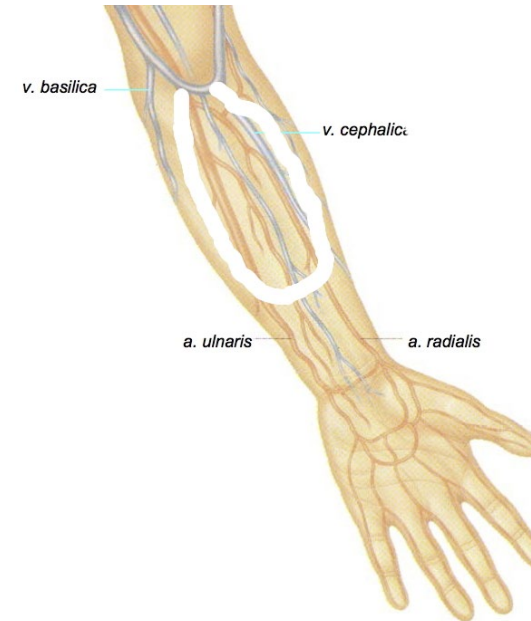
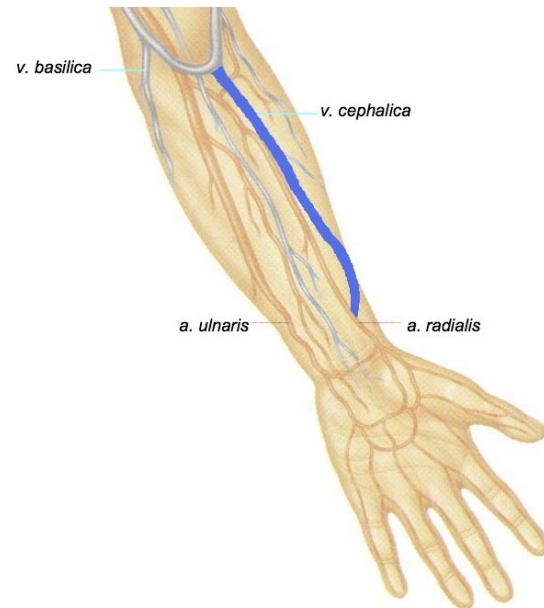


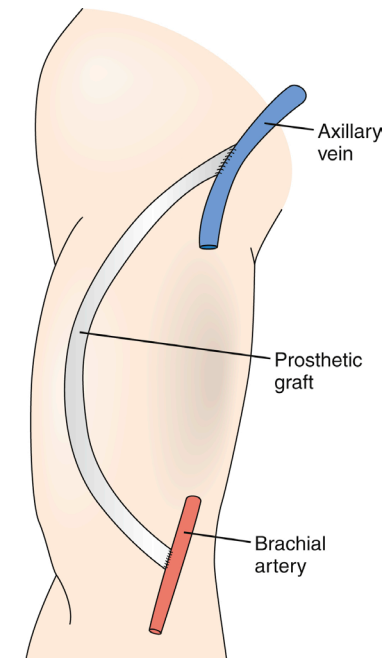
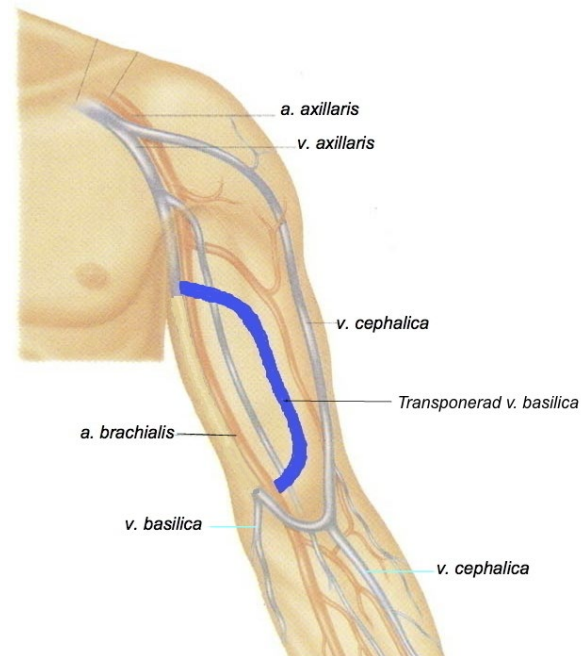
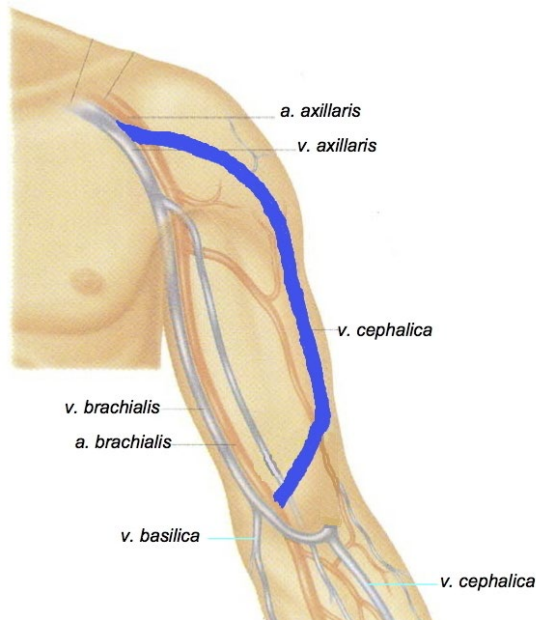
Underarmsacceser

- Radiocephal fistel
- AV-graft på underarmen - loopgraft



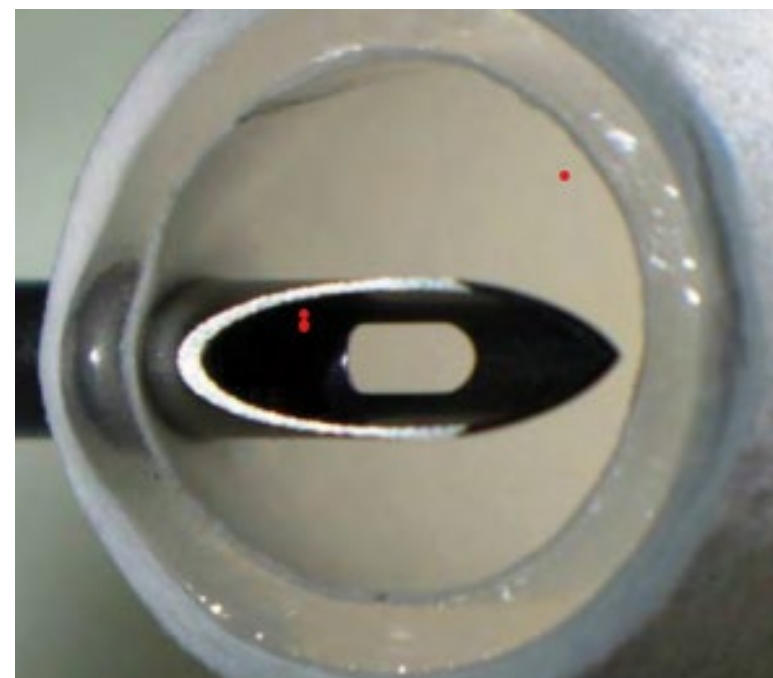
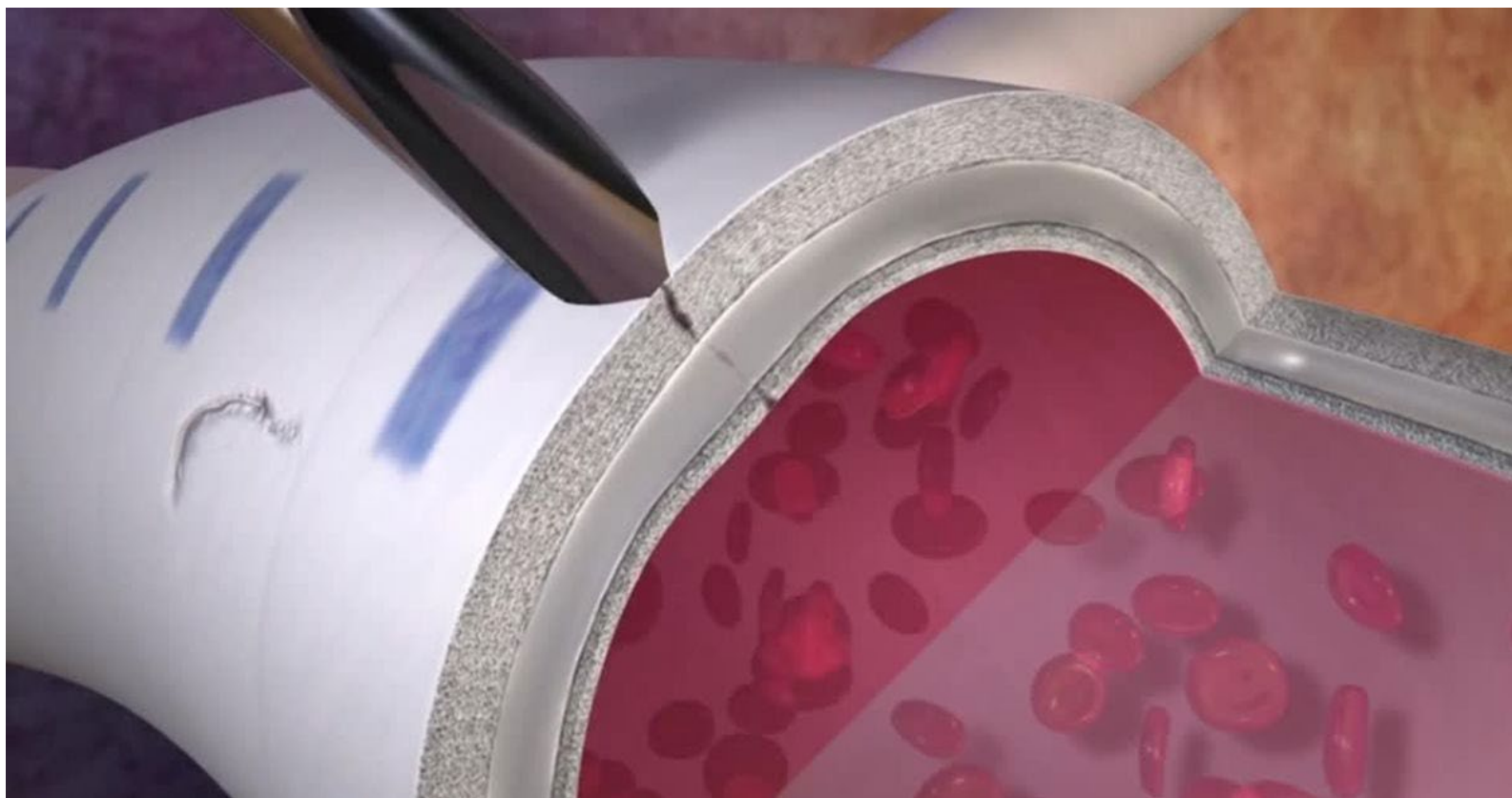
Överarmsaccesser

- Brachiocephal fistel
- AV-fistel mellan a brachialis och transponerad v basilica
- AV-graft mellan a brachialis och vena axillaris

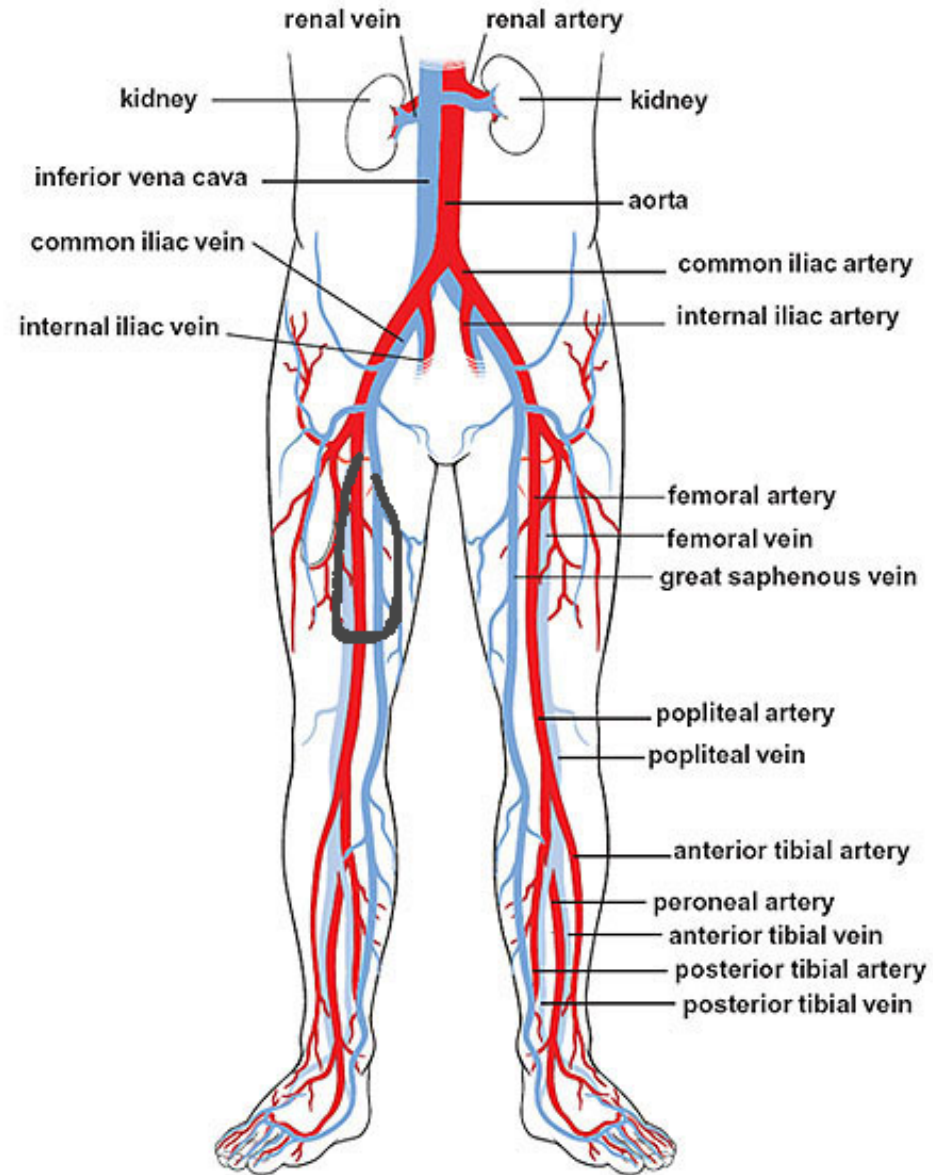


Graftmaterial

- ePTFE (Gore-tex)
 - Standard
 - "Quick-stick" – early puncture graft (Flixene/Acuseal)
- Biologiska
 - Omniflow II (Bovint kärl m förstärkning)



- Lårgraft bör enbart användas när öppna centrala vener på överkroppen saknas.
- Lämpligt att välja biologiskt graft pga infektionsproblem med PTFE.



HOMWORK:
Poiseuille's Law

$$Q = \frac{\Delta P \pi r^4}{8 \eta l}$$