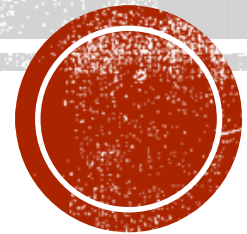


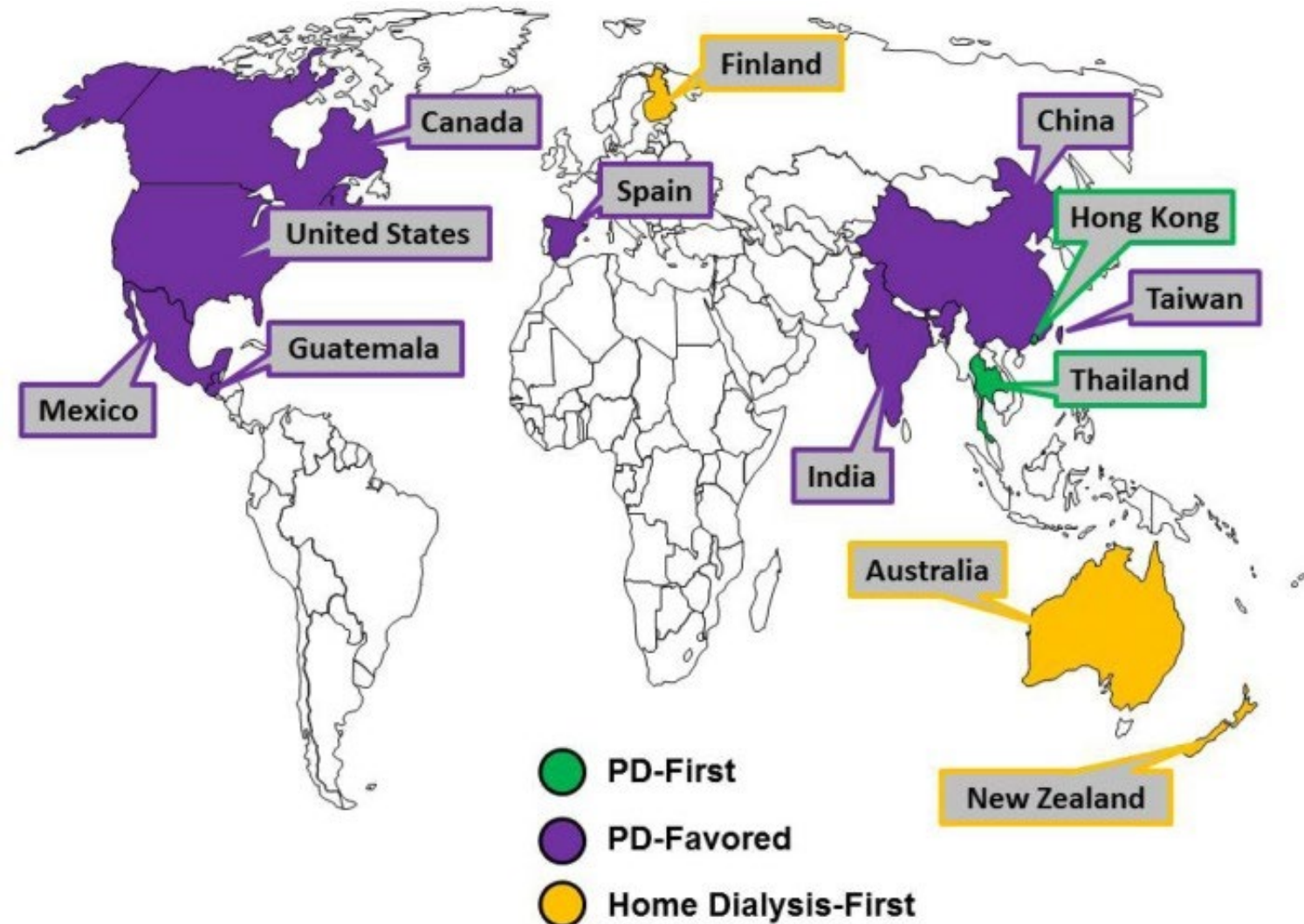
PRO/CON PD GÅR ALLTID!?

John Søfteland/ pro- Urska Bonnevier/ con



HUR ÄR DET NU? HUR MÅNGA BÖR HA PD?

- Andelen i PD i Sverige är 20-25% beroende på år. Detta ligger i linje med det internationella snittet.
- Hong Kong implementerade "PD-first" på 80-talet framförallt med ekonomiska argument och kom upp i 76%.

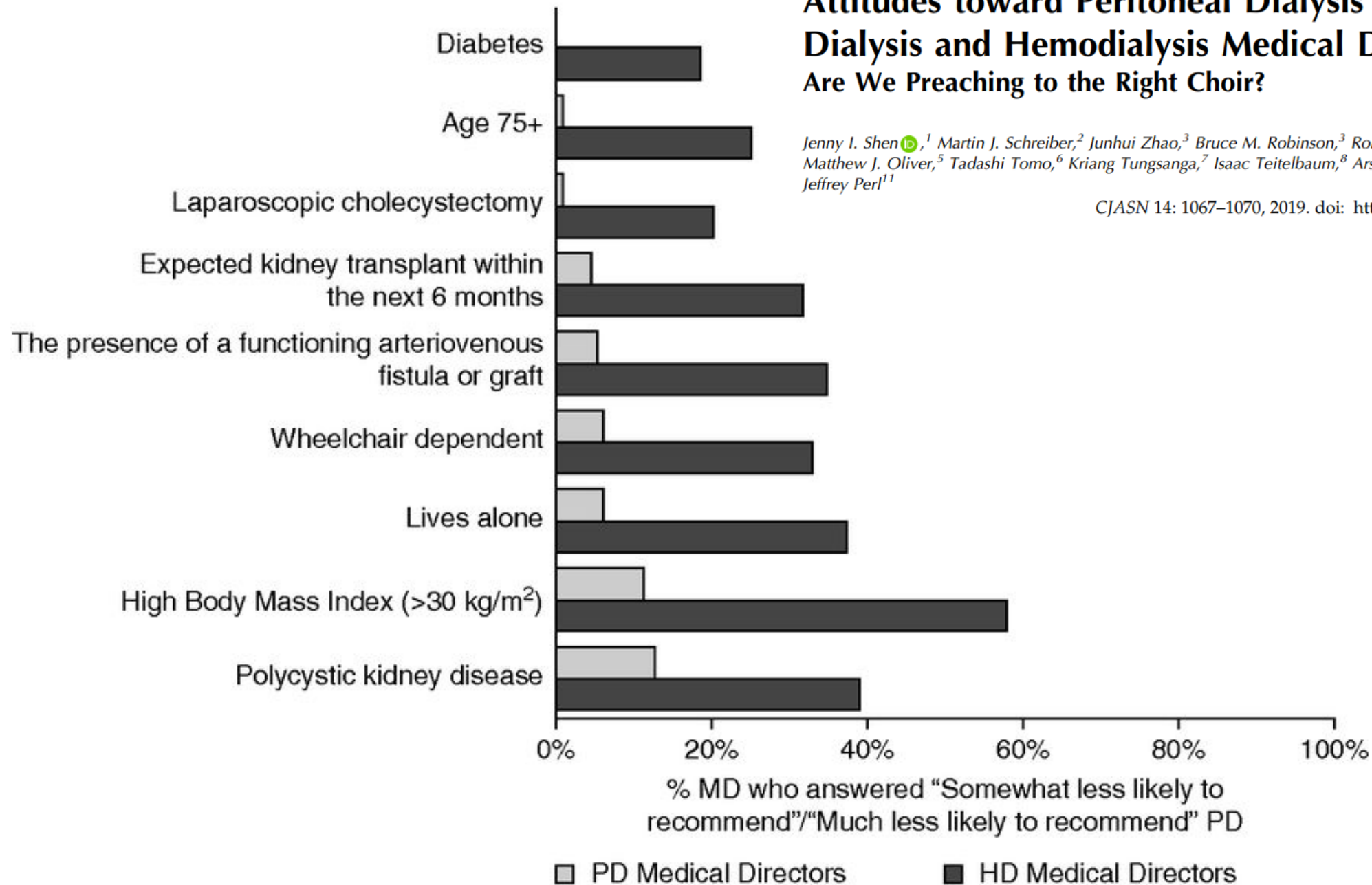


Attitudes toward Peritoneal Dialysis among Peritoneal Dialysis and Hemodialysis Medical Directors

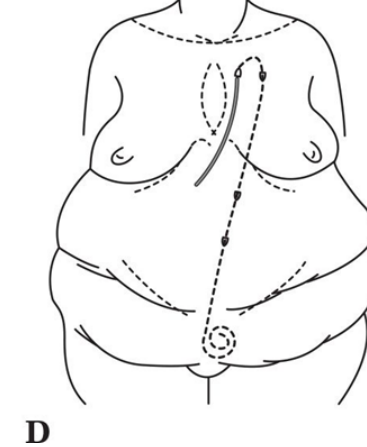
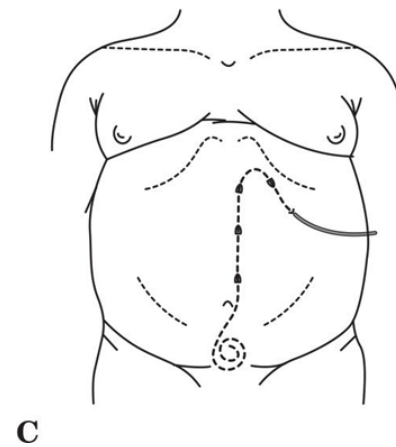
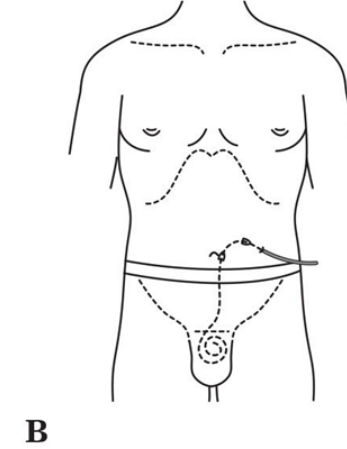
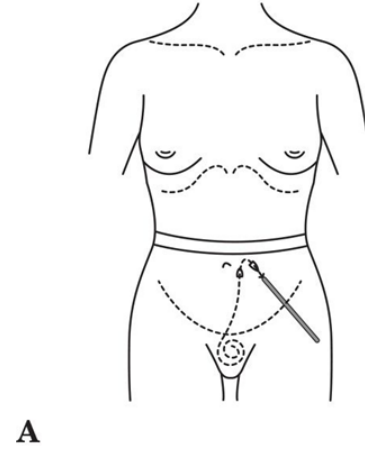
Are We Preaching to the Right Choir?

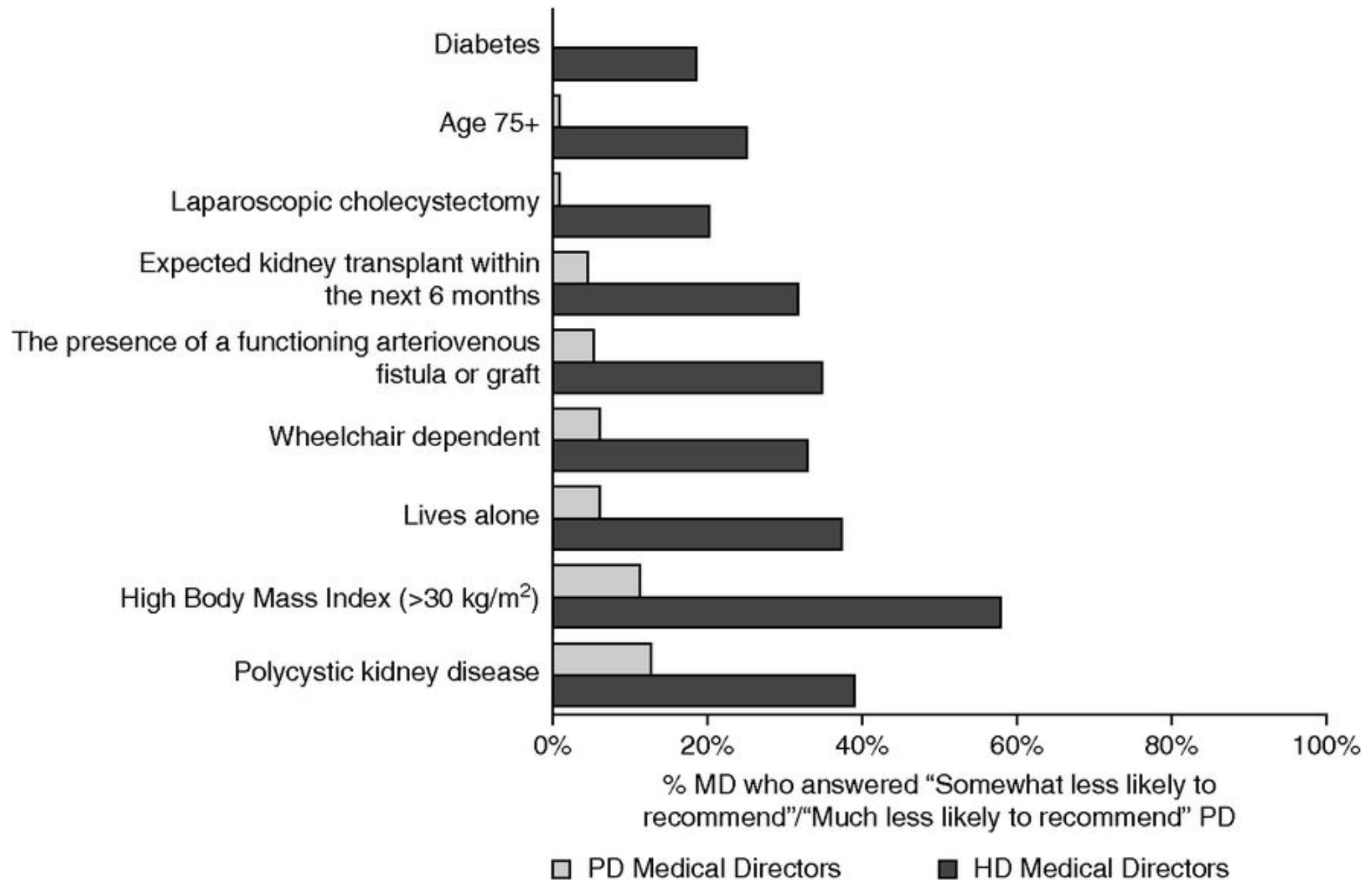
Jenny I. Shen¹, Martin J. Schreiber², Junhui Zhao³, Bruce M. Robinson³, Ronald L. Pisoni³, Rajnish Mehrotra⁴, Matthew J. Oliver⁵, Tadashi Tomo⁶, Kriang Tungsanga⁷, Isaac Teitelbaum⁸, Arshia Ghaffari⁹, Mark Lambie¹⁰ and Jeffrey Perl¹¹

CJASN 14: 1067–1070, 2019. doi: <https://doi.org/10.2215/CJN.01320119>



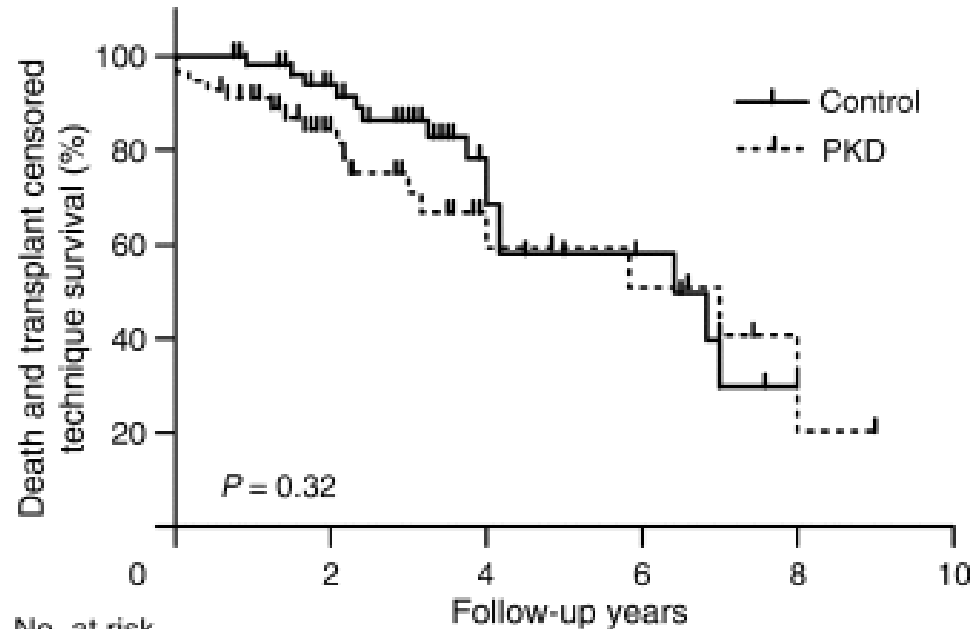
ALTERNATIVA EXIT SITES





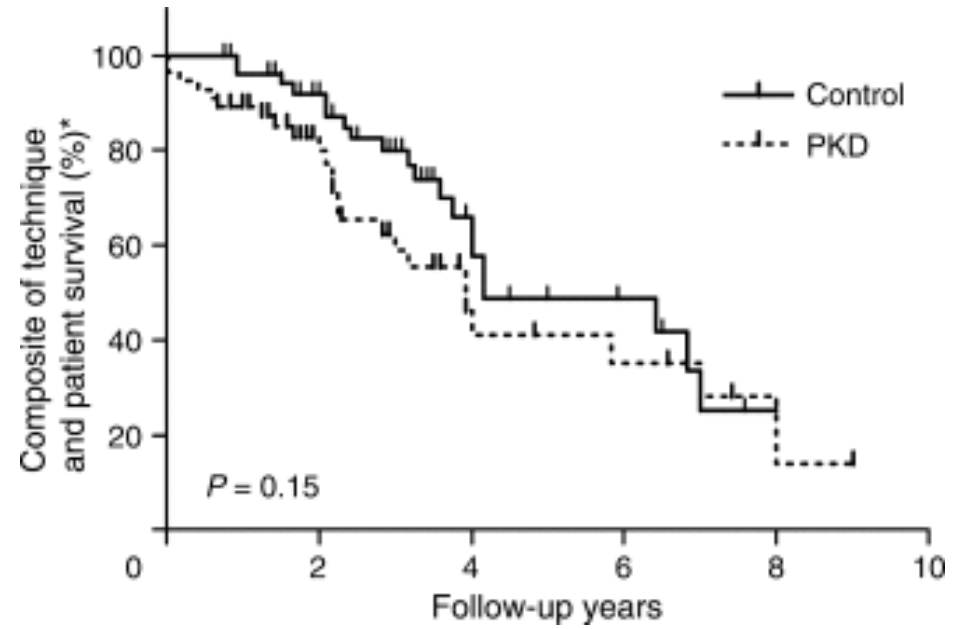
PD IN POLYCYSTIC KIDNEY DISEASE PATIENTS

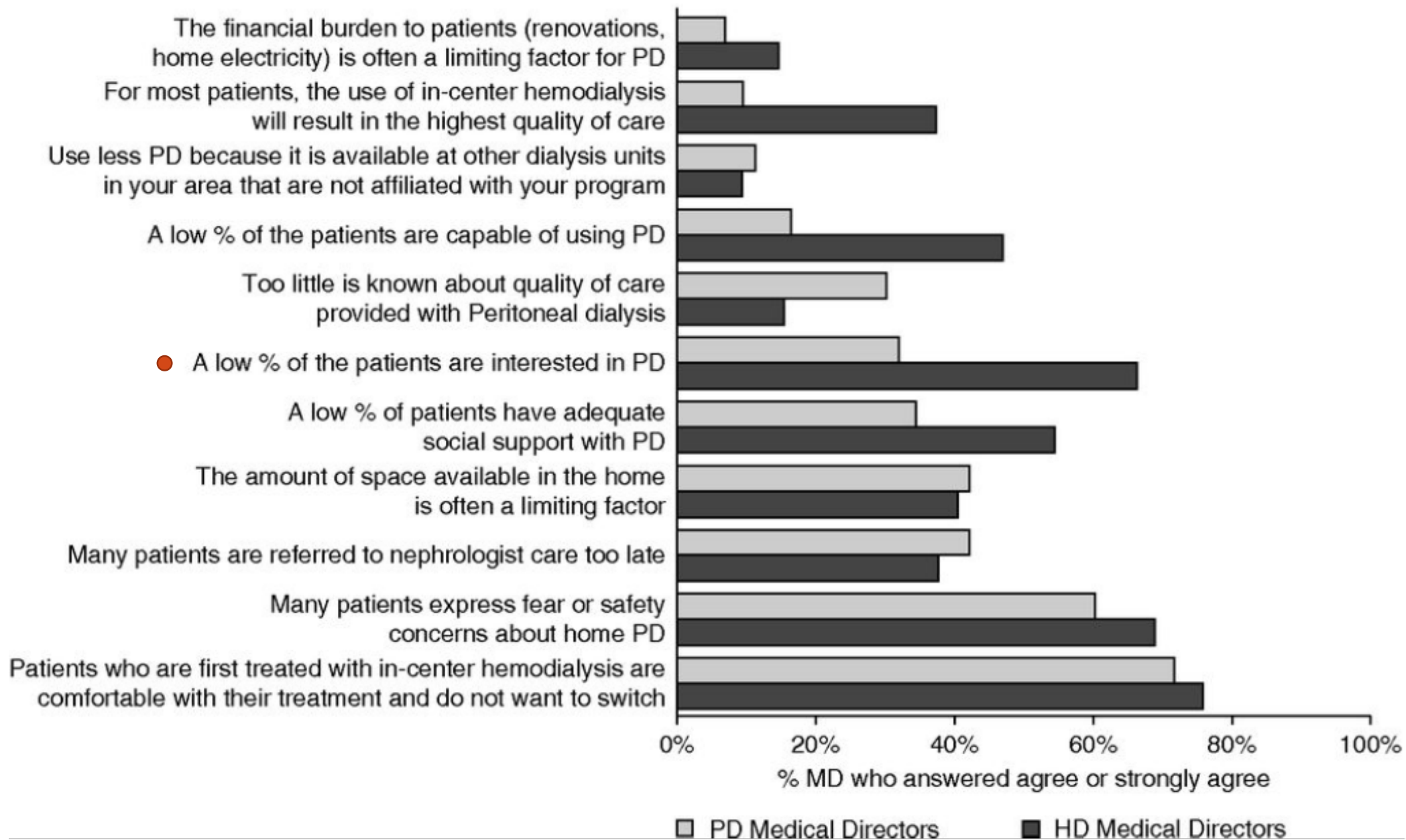
Patient survival



No. at risk	0	2	4	6	8
PKD	56	30	10	7	2
Control	56	40	16	8	1

Technique survival





A comparison of quality of life between patients treated with different dialysis modalities in Taiwan

Chu-Chun Hsu^{1,2}, Chiu-Ching Huang^{3,4}, Yue-Cune Chang⁵, Jin-Shuen Chen^{6,7}, Wen-Chen Tsai⁸, Kwua-Yun Wang^{2,9*}

Subscale score (0–30)	HD (n = 600) Mean±SD	PD (n = 387) Mean±SD	p-value ^a
Health and functioning	18.09±4.21	19.25±4.31	<0.001
Socioeconomic	18.61±3.84	19.36±4.17	0.004
Psychological/spiritual	18.70±4.85	19.87±5.16	<0.001
Family	21.77±4.68	22.92±4.69	<0.001
Total quality of life	18.88±3.88	19.94±4.14	<0.001

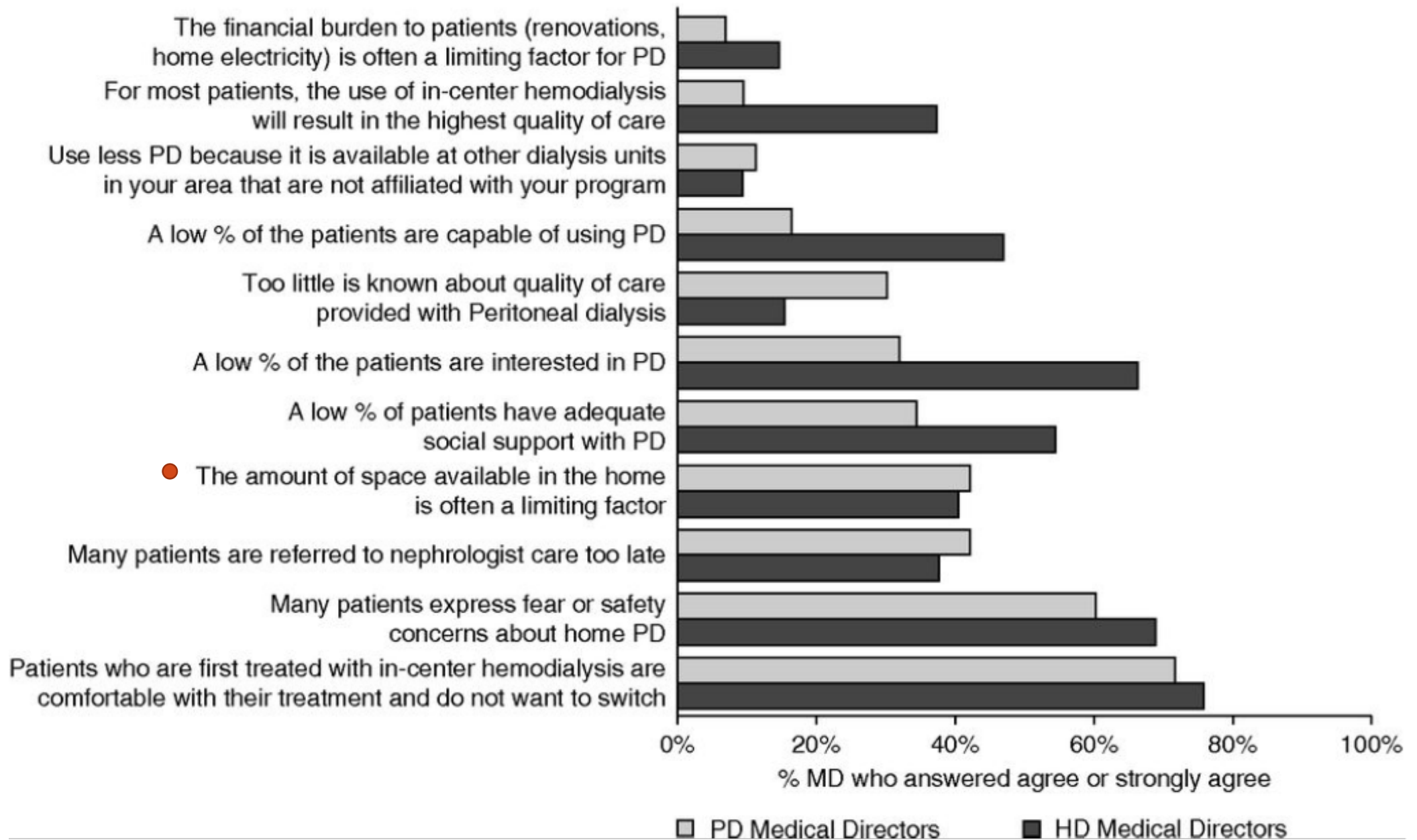
^a Student's t-test.

HD, hemodialysis; PD, peritoneal dialysis; SD, standard deviation.

<https://doi.org/10.1371/journal.pone.0227297.t002>

QLI-D is a disease-specific tool that measures satisfaction and the importance of the determinants of QOL. The scale has 36 items and four subscales: health and functioning, social and economic, psychological/spiritual, and family. Final scores range from 0 to 30, with higher scores indicating better QOL.





Lifetime cost-effectiveness analysis of first-line dialysis modalities for patients with end-stage renal disease under peritoneal dialysis first policy

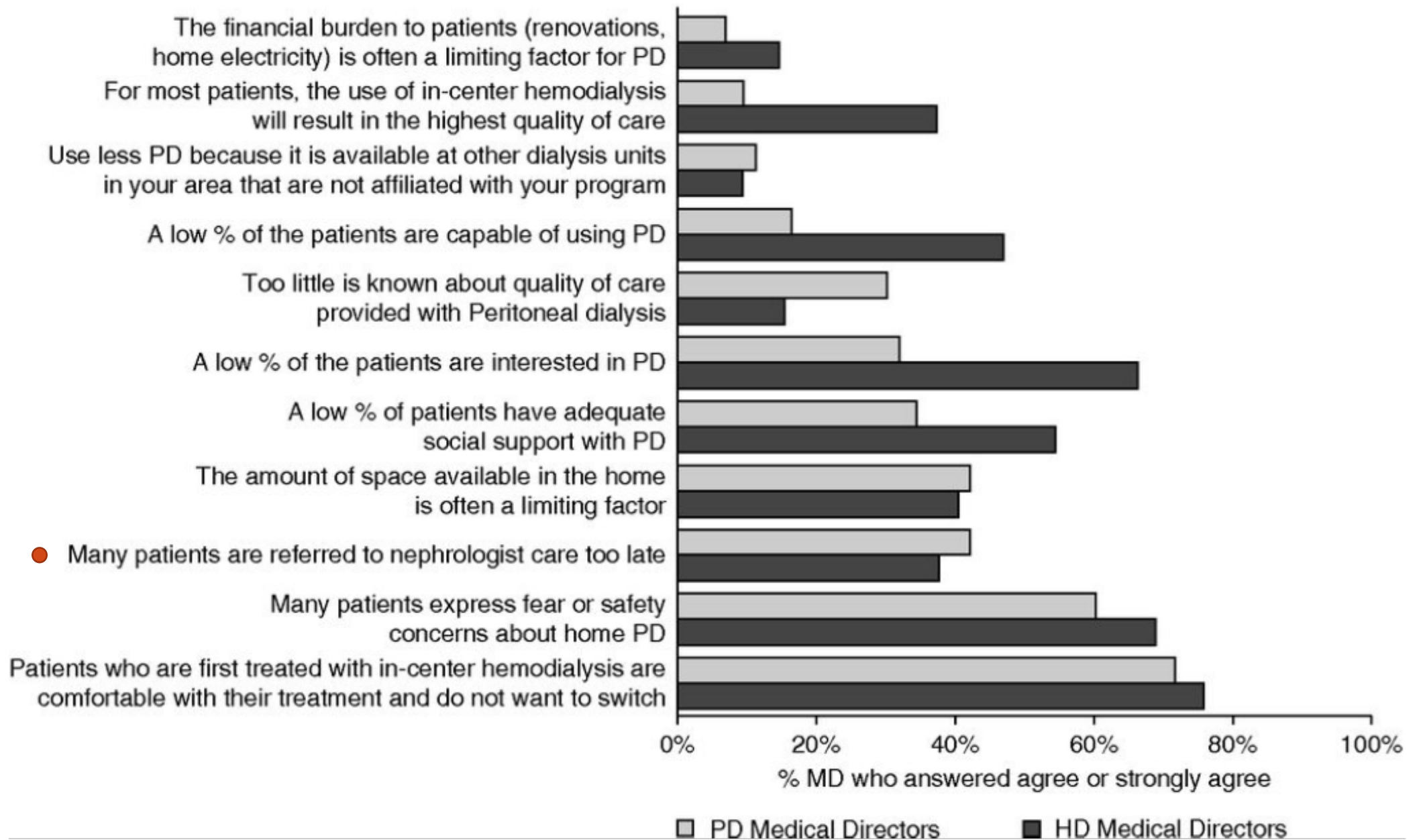
Carlos K H Wong ¹, Julie Chen ^{2 3}, Samuel K S Fung ⁴, Maggie Mok ⁵, Yuk Lun Cheng ⁶,

For both healthcare provider and societal perspectives, PD as first-line dialysis modality was cost-saving relative to hospital-based HD

VS.

Lgh. storlek kvm	1 300 kr/mån 77 kvm	1 300 kr/kvm 77 kvm	1 350 kr/mån 77 kvm	1 350 kr/kvm 77 kvm	1 450 kr/mån 77 kvm	1 450 kr/kvm 77 kvm
1:a 35	4 757	1 631	4 940	1 694	5 306	1 819
2:a 45	5 860	1 563	6 085	1 623	6 536	1 743
2:a 55	6 549	1 429	6 801	1 484	7 305	1 594
3:a 65	7 514	1 387	7 803	1 441	8 381	1 547
3:a 75	8 204	1 313	8 519	1 363	9 150	1 464
4:a 85*	9 238	1 304	9 593	1 354	10 304	1 455





Comparison of mortality and complications between urgent-start peritoneal dialysis and urgent-start hemodialysis: A systematic review and meta-analysis

Xinyu Ding¹ | Wenfeng Gao² | Yingbo Guo¹ | Qian Cai¹ | Yu Bai¹

Studies	Estimate (95% C.I.)	Events/USPD	Events/USHD
Lobbedez 2008	0.92 (0.31, 2.68)	6/34	5/26
Koch 2011	0.72 (0.45, 1.16)	20/66	24/57
Jin 2016	1.14 (0.41, 3.15)	8/96	6/82
Li 2017	0.10 (0.03, 0.33)	3/68	16/37
Dias 2020	0.65 (0.39, 1.10)	18/93	27/91
Zang 2020	0.62 (0.38, 1.00)	27/309	33/233
Overall (I²=56.34 %, P=0.04)	0.61 (0.40, 0.94)	82/666	111/526

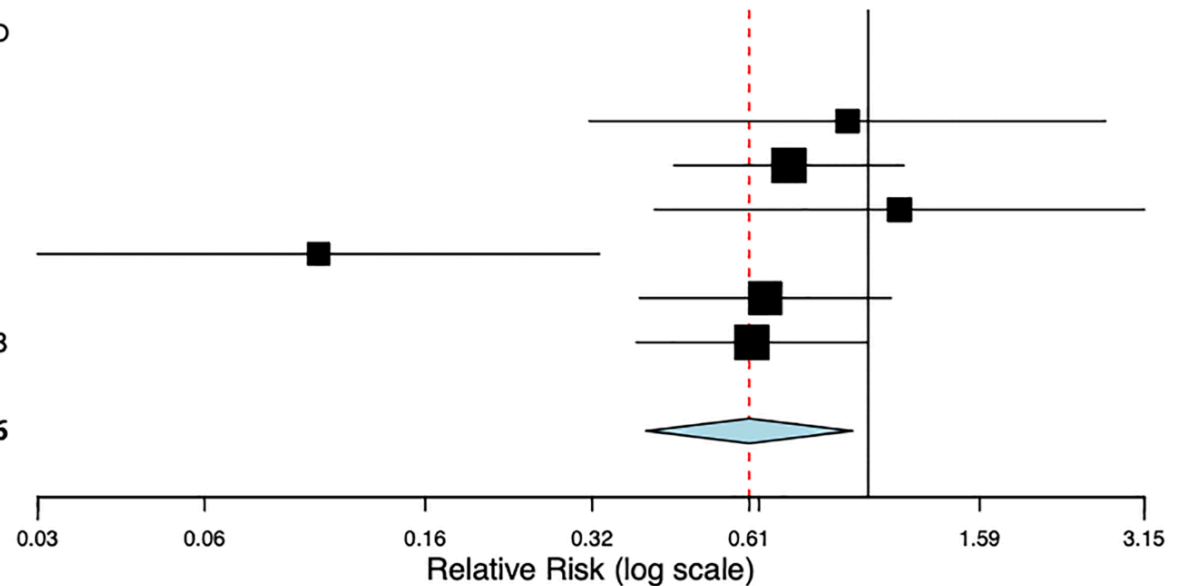
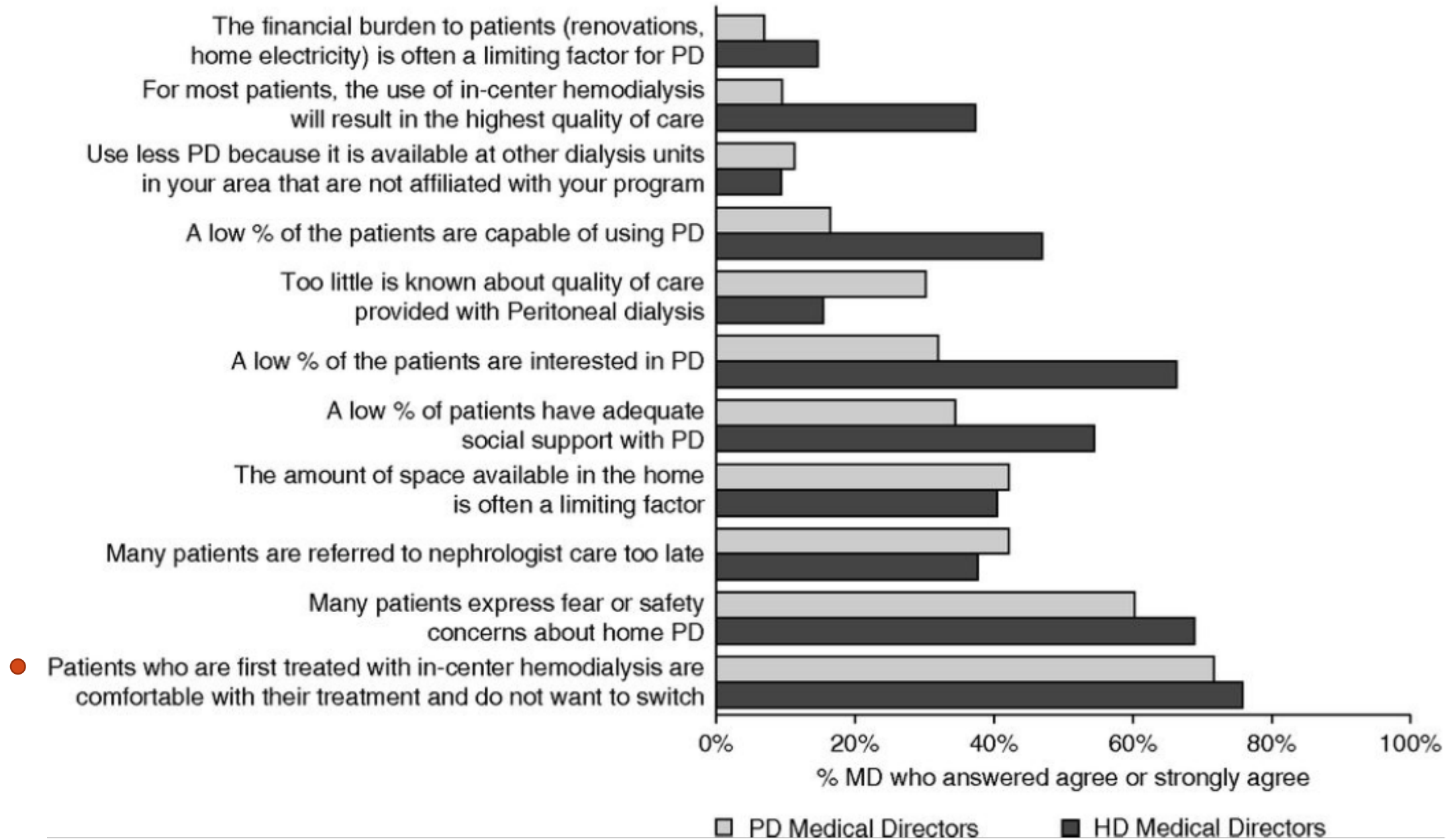


FIGURE 2 Forest plot of risk of mortality with urgent-start PD vs. urgent-start HD [Color figure can be viewed at wileyonlinelibrary.com]





SAM
2022

OKT 25
TUESDAY
DOORS OPEN @ 13:45

LET'S WATCH TOGETHER

BONNEVIER VS
SØFTELAND

PRO/CON PD GÅR ALLTID!?



VS

