

Research

KI's research spans the entire biomedical field – from basic experimental research to clinical studies in collaboration with the health care system.

Clinic-based research facilitates the swift transfer of experimental findings to patient benefit, and clinical observations provide the basis for new research ideas.

Research areas

- ▶ Cancer and Haematology
- ▶ Cell, Molecular and Structural Biology
- ▶ Circulation and Respiration
- ▶ Endocrinology and Metabolism
- ▶ Epidemiology, Biostatistics and Public Health Sciences
- ▶ Infection, Inflammation, Immunology and Microbiology
- ▶ Neuroscience and Mental Health
- ▶ Developmental Biology, Reproductive, Regenerative and Reparative Medicine
- ▶ Healthcare Sciences and Ageing



Our research and education are incredibly important for contributing to people's health both nationally and globally.

Annika Östman Wernerson
President, Karolinska Institutet



During the period 2020–2022, articles were published together with researchers based in approximately 180 different countries. The country with the most co-publications was the United States, closely followed by Great Britain and Germany.

Karolinska Institutet (KI) is one of the world's leading medical universities. Our vision is to advance knowledge about life and strive towards better health for all. Karolinska Institutet accounts for the single largest share of all academic medical research conducted in Sweden and offers the country's broadest range of education in medicine and health sciences. The Nobel Assembly at Karolinska Institutet selects the Nobel Laureates in Physiology or Medicine.



**Karolinska
Institutet**

This is

KI

Education

KI offers the widest range of medical education in Sweden. At KI, approximately 10,000 students study longer or shorter education programmes and courses. Most of the study programmes lead to professional degrees while others offer a general degree.

13

beginner's programmes

32

continuation programmes

115

freestanding courses

Full-time equivalent students

6,722

76 %
Women



24 %
Men

Degrees

2,794

Doctoral students

2,173

64 %
Women



36 %
Men

Doctoral degrees (PhD)

329

Professors

341

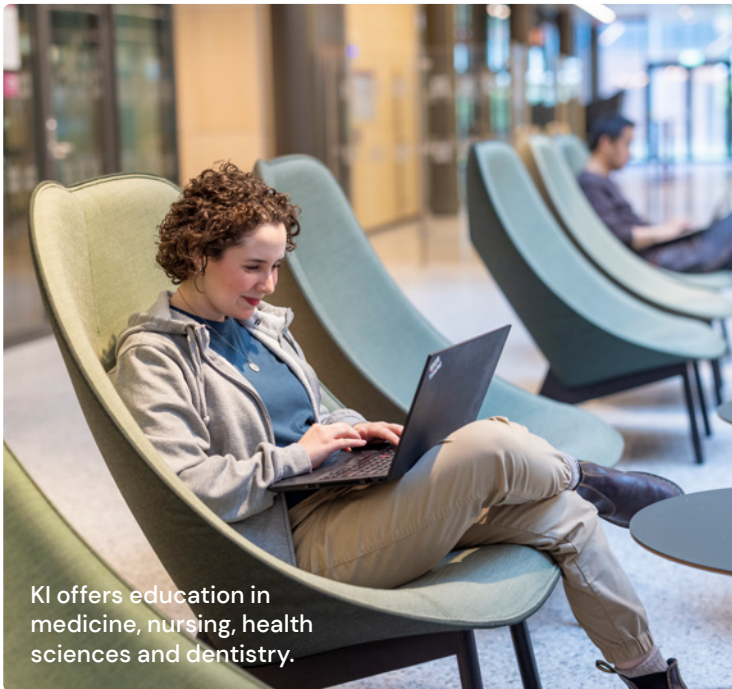
33 %
Women



67 %
Men

External research grants

4,8 SEK billion



KI offers education in medicine, nursing, health sciences and dentistry.

Doctoral education

KI has over 2,000 doctoral students which means that 34 % of all doctoral students in Medicine and Health Sciences in Sweden are at KI.

Each year, over 350 students complete their doctoral degree (PhD). KI's doctoral students have backgrounds in a variety of scientific fields, and a large proportion come from abroad.



Education and research is conducted on Campus Solna and Campus Flemingsberg, and through the healthcare sector in the Stockholm region.

Collaboration

Close collaboration and innovation are an important part of the transition of knowledge and results to the community. Such transitions will promote better health and cure disease.

KI has extensive international partnerships in both research and education and a broad community engagement. This will increase even more, not least through the health-related areas included in the UN Agenda 2030.

Follow Karolinska Institutet



Get the latest news from Karolinska Institutet in social media and on ki.se/en

Karolinska Institutet
SE-171 77 Stockholm
Phone +46 8 524 800 00